

“SMART RAILWAY SIGNAL AND GATE AUTOMATION FOR ROAD VEHICLE SAFETY”

DR. B. Veeru¹, S. Meghana², K. Arun Kumar³, P. Rahul⁴, K. Pavan Kumar⁵

Associate Professor, Dept. of Electrical & Electronics Engineering,

Christu Jyothi Institute of Technology & Science, Jangaon, Telangana, India¹

Student, Dept. of Electrical & Electronics Engineering,

Christu Jyothi Institute of Technology & Science, Jangaon, Telangana, India²⁻⁵

Abstract: The Smart Railway Signal and Gate Automation System for Road Vehicle Safety is designed to reduce accidents at railway level crossings and improve safety for both trains and road vehicles. Many railway crossing accidents occur due to human error, delayed gate operation, or lack of proper warning systems. This project aims to solve these problems by using automated technology to control railway signals and crossing gates.

The system uses sensors and a microcontroller to detect the arrival and departure of a train near the railway crossing. When a train approaches the crossing, the sensors send a signal to the control unit, which automatically activates warning lights and alarms for road vehicles and closes the gate to stop traffic. After the train safely passes the crossing, the system automatically opens the gate and resets the signals, allowing road vehicles to move again.

This automation helps to eliminate manual operation, reduce delays, and prevent accidents caused by negligence or miscommunication. The system ensures timely gate closure and opening, providing a safer environment for road users and railway operations.

I. INTRODUCTION

Smart railway signal and gate automation is an advanced system developed to improve safety at railway level crossings. Railway crossings are critical points where roads intersect with railway tracks, and accidents often occur due to manual errors, negligence, or lack of proper warning systems. To overcome these problems, automation technology is used to control railway signals and gates efficiently.

The system works by using sensors and a control unit to detect the presence of an approaching train. When the train comes near the crossing, the system automatically activates warning signals such as lights and alarms to alert road users. At the same time, the railway gate is closed to prevent vehicles from crossing the track, ensuring safety for both passengers and road travelers.

After the train passes the crossing safely, the system automatically opens the gate and resets the signals to normal operation. This reduces the need for manual intervention and minimizes human errors. The smart automation system improves traffic management, reduces delays, and enhances overall transportation safety. Therefore, smart railway signal and gate automation plays an important role in protecting human lives and ensuring smooth railway operations.

II. LITERATURE SURVEY

1. Automatic Railway Gate Control System: A study proposed an automatic railway gate control system that detects trains using sensors and automatically operates the railway gate and warning signals. The system includes modules such as train detection, alarm generation, signal lights, and gate control. Ultrasonic sensors are used to identify train movement and obstacles on the track, and the controller closes or opens the gate accordingly. The research shows that automated systems can provide a more reliable and cost-effective solution compared to manual gate operation.

2. RFID-Based Railway Gate Automation: Another research introduced a system using RFID technology and IR sensors to detect approaching trains at railway crossings. A microcontroller processes the signals from the sensors and automatically closes the gate while activating warning lights and alarms for road vehicles. Once the train crosses the

track, the system opens the gate automatically. This approach reduces human error and ensures accurate and timely gate operation.

3. Microcontroller-Based Smart Railway Crossing: A review on smart railway crossings explains the use of microcontrollers, IR sensors, LCD displays, buzzers, and motor drivers to control railway gates automatically. Sensors placed near the crossing detect the arrival and departure of trains and send signals to the microcontroller, which controls the gate motor and traffic signals. The system helps to prevent accidents and reduces dependence on gatekeepers.

4. Arduino-Based Automatic Signal and Gate System: Another study implemented a railway crossing system using Arduino and IR sensors. The sensors detect the presence of trains and send data to the Arduino controller, which activates warning signals and closes the gate using a servo motor. The system is designed to improve safety at railway crossings, especially in areas with heavy road traffic.

5. PLC-Based Railway Gate Control System: Research has also explored the use of Programmable Logic Controllers (PLC) for railway gate automation. In this method, sensors detect the approaching train and send signals to the PLC. The PLC processes the information and automatically closes the railway gate and changes the traffic signals to red. After the train passes, the gate opens and the traffic signal turns green. This system improves reliability and ensures safe operation at crossings.

6. Wireless and Communication-Based Railway Safety Systems: Some modern studies integrate wireless communication technologies such as Zigbee and GSM for railway safety systems. These systems monitor train position, detect track conditions, and automatically control gates and signals. They also allow communication between train and station modules to improve railway traffic management and safety.

III. PROBLEM STATEMENT

Railway level crossings are critical points where railway tracks intersect with roadways. Many of these crossings still rely on manual gate operation or lack proper automated safety systems. Due to human error, delayed gate closing, poor communication, and lack of proper warning signals, accidents between trains and road vehicles frequently occur. These accidents can lead to loss of human life, vehicle damage, and disruption of railway and road traffic.

In many rural and semi-urban areas, railway crossings do not have gatekeepers or proper signaling systems. Road users may attempt to cross the track without knowing that a train is approaching, which increases the risk of collisions. Additionally, manual systems may cause unnecessary delays in road traffic due to late opening of gates.

Therefore, there is a need for a smart and automated railway signal and gate control system that can detect approaching trains and automatically operate warning signals and crossing gates. Such a system should ensure timely gate closure, proper signaling, and automatic gate opening after the train passes, thereby improving safety for road vehicles and reducing the chances of accidents at railway crossings.

IV. BLOCK DIAGRAM

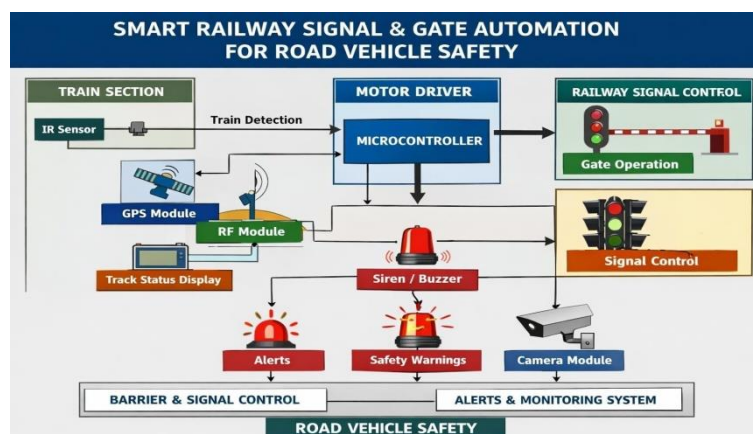
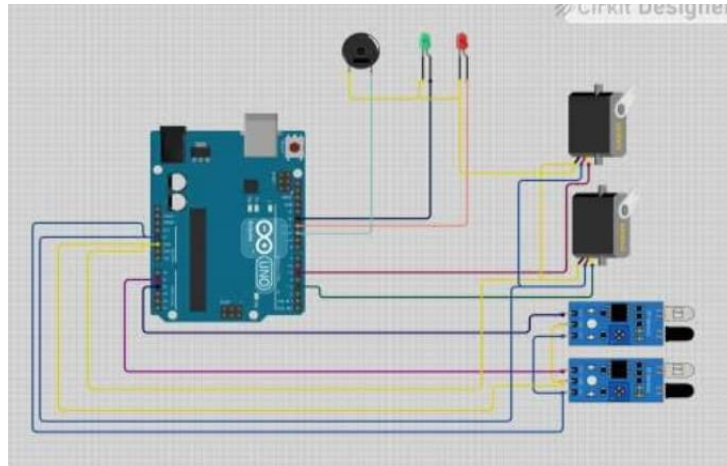
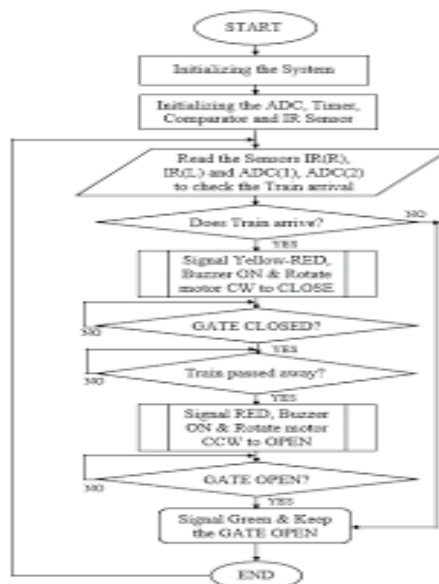


Fig:1 Block Diagram

V. CIRCUIT DIAGRAM



VI. FLOW CHART



VII. SYSTEM ARCHITECTURE OVERVIEW

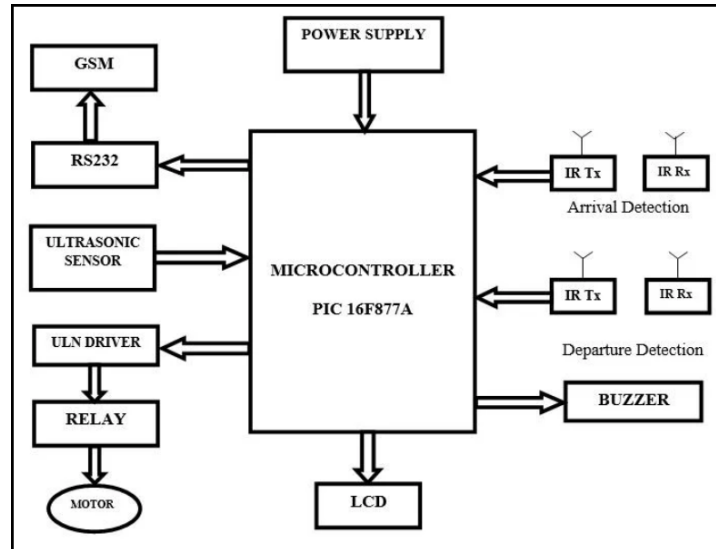
The system architecture of the smart railway signal and gate automation project is designed to ensure safe and efficient control of railway level crossings. It integrates detection, processing, signaling, and gate control modules to automatically manage train and road traffic without human intervention.

The first component of the system is the train detection unit, which includes sensors such as IR sensors, ultrasonic sensors, or other detection devices placed near the railway track. These sensors continuously monitor the track area and detect the presence of an approaching train. Once a train is detected, the sensor sends a signal to the control unit for further processing.

The second important component is the control unit, usually a microcontroller. It acts as the brain of the system and processes the input received from the sensors. Based on the programmed instructions, it decides when to activate warning signals and operate the gate mechanism. It ensures proper timing and coordination between all connected components.

The system also includes a signal unit, which consists of traffic lights (red and green LEDs) and a warning buzzer. When a train approaches, the red signal is activated and the buzzer sounds to alert road users to stop. After the train passes, the signal changes to green, allowing vehicles to move safely.

Another key component is the gate control mechanism, which uses a motor such as a DC motor or servo motor to open and close the railway gate automatically. When the train is detected, the control unit commands the motor to close the gate. After the train crosses the railway section, the gate is reopened automatically.



System Architecture of Smart Railway Signal and Gate Automation for Road Vehicle Safety

VIII. WORKING PRINCIPLE

The working principle of the Smart Railway Signal and Gate Automation System is based on automatic detection, processing, and control to ensure safety at railway level crossings. The system operates without human intervention and responds automatically to train movement.

First, the sensor unit continuously monitors the railway track area. When a train approaches the crossing, the sensors (such as IR or ultrasonic sensors) detect its presence and send a signal to the control unit. This detection ensures timely action before the train reaches the crossing.

Second, the control unit (microcontroller) receives the input from the sensors and processes the information according to the programmed instructions. It acts as the decision-making unit of the system. Once the train is detected, the controller activates the safety mechanisms.

Next, the system activates the warning signals, such as red traffic lights and a buzzer. These alerts inform road users that a train is approaching and they must stop. At the same time, the controller sends a command to the gate mechanism.

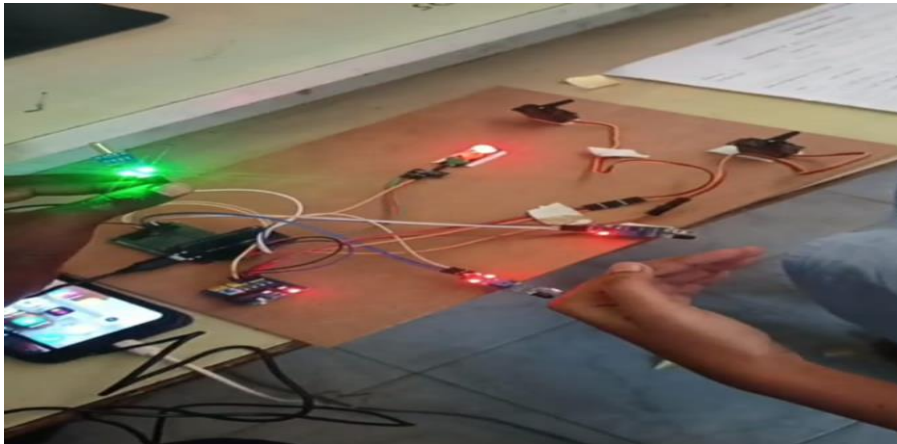
The gate control motor then automatically closes the railway gate to prevent vehicles from crossing the track. After the train completely passes the crossing and the sensors confirm that the track is clear, the control unit reopens the gate.

IX. RESULTS AND DISCUSSION

The implementation of the Smart Railway Signal and Gate Automation System shows significant improvement in safety and traffic management at railway level crossings. The system successfully detects the approaching train using sensors and automatically controls the warning signals and gate mechanism. The results indicate that the gate closes at the correct time, ensuring that road vehicles are stopped before the train reaches the crossing.

During testing, the warning lights and buzzer activated immediately after train detection, providing clear signals to road users. The automatic gate operation worked efficiently without delay, reducing the risk of accidents caused by human error. The system also reopened the gate smoothly after the train passed, allowing normal traffic flow to resume.

The discussion of the system performance shows that automation improves reliability compared to manual gate operation. It reduces the dependency on gatekeepers and minimizes chances of negligence. The response time of the sensors and microcontroller plays a major role in ensuring timely action. Proper calibration of sensors is necessary for accurate detection.



X. CONCLUSION

The Smart Railway Signal and Gate Automation System is an effective solution for improving safety at railway level crossings. The system automatically detects the approaching train and controls the signals and gate without human intervention. This reduces the chances of accidents caused by manual errors, negligence, or delay in gate operation.

By using sensors, a control unit, and an automatic gate mechanism, the system ensures timely warning to road users and proper closure of the gate before the train arrives. After the train passes, the system automatically restores normal traffic flow. This improves efficiency and reduces congestion at crossings.

Overall, the proposed system enhances road vehicle safety, protects human lives, and supports modern railway infrastructure. The automation technology provides a reliable, cost-effective, and efficient method for managing railway crossings safely. Therefore, smart railway signal and gate automation is highly beneficial for improving transportation safety and developing intelligent traffic systems.

XI. FUTURE WORK

The future improvements of the Smart Railway Signal and Gate Automation System can focus on integrating advanced technologies to make the system more efficient and intelligent. One major enhancement can be the use of Internet of Things (IoT) technology, which allows real-time monitoring of railway crossings through mobile applications or centralized control systems.

Another improvement can include the implementation of GSM or wireless communication modules to send alerts to nearby stations and authorities in case of emergencies or system faults. This will help in better coordination and faster response during unexpected situations.

The system can also be upgraded by using Artificial Intelligence (AI) to predict train movement and improve decision-making accuracy. Advanced sensors such as high-precision cameras or radar-based detection systems can further increase reliability and reduce false detections.

Additionally, future work may include integrating the system with smart city infrastructure and traffic management systems for better synchronization between road and railway networks. Solar-powered energy systems can also be introduced to make the system more sustainable and energy-efficient.

REFERENCES

- [1]. R. Mahmud & A. Sarker, "RFID-based intelligent railway gate control system," *Int. J. Sci. Eng. Res.*, 2018. IJLTEMAS
- [2]. R. Gopinatha & B. Siva Shankar, "PLC-based railway level crossing gate control," *IJETCSE*, 2020. IJLTEMAS
- [3]. Smart vision-based railway crossing surveillance and alert systems. IJLTEMAS

- [4]. Wireless communication systems for railway signal automation at unmanned Level crossings Railway Signalling and Interlocking — Gregor Theek & Sergej Vlasenko (3rd Edition) comprehensive coverage of signalling principles, interlocking, train detection, hazard systems and safety.
- [5]. Railway Signalling Systems — John Robert Day & Basil Knowlman Cooper classic overview of signalling practice and principles.
- [6]. Railway Signal Engineering — Leonard P. Lewis — older but foundational text on signal engineering including level crossing gates, mechanical and electrical signals.
- [7]. Automatic Railway Signaling, Part I — Ray Robert Rockwell — focuses on automatic signalling principles and practices (classic text).
- [8]. Signalling for Track Engineers — IRICEN (Indian Railways Institute of Civil Engineering) — practical guide for railway engineers on signalling including updates from Indian practice.
- [9]. Railway-signalling: Automatic — Francis Raynar Wilson (introductory treatment of automatic signals and track circuits).
- [10]. Railway Signalling Manuals & Handbooks from Indian Railways (Railway Board) — includes automatic signalling, level crossing safety, and technical criteria relevant to rail automation.