

# Smart Placement Co-Ordinating App

Hrishikesh J<sup>1</sup>, Dr. H. R. Divakar<sup>2</sup>

PG Scholar (MCA), Dept. of MCA, P.E.S College of Engineering, Mandya, India<sup>1</sup>

Associate Professor, Dept. of MCA, P.E.S College of Engineering, Mandya, India<sup>2</sup>

**Abstract:** The Smart Placement Co-Ordinator Android application is available for portable devices. The Android program is simple and user-friendly and it aids college students in planning their placement activities. The application is made up of three essential components: Student, Company, and Placement Cell. This application can be used to handle data about students and employers for placement by the college placement cell. The application also makes it possible for the placement cell to view comments made by companies that come to the college to recruit students, including input on the institution's hospitality, the plans for placements, the students' skills and employability, etc. The application gives students access to details about the business visiting college for placements. Because the student can only see the list of positions for which he/she is eligible to apply, there is less clutter. The application enables the learner to submit an application for the jobs well. Every time a visiting company advertises its job requirements, the qualified students will be contacted by SMS. The application allows organizations that come to the university to recruit to post details about their business, job descriptions, and requirements. Employers have the ability to offer feedback on the college hiring process.

**Keywords:** Android, mobile, placement, business, Short Message Service.

## I. INTRODUCTION

The students can hone their abilities and discover how to stand out from the crowd in colleges. However, with so many options, it might be difficult for students to pick a school that will advance their professional careers. There are numerous factors that affect college decisions, but occasionally the placement process is what tip the scales in favour of one college.

The "campus placement" or "campus interview" program is conducted either inside educational institutions or in a public setting to provide jobs to students who are enrolled in or nearly finished with the course. As part of this program businesses visit colleges to select students based on their aptitude for work, capacity, attention span, and goal-setting.

The primary objective of this software is to assist with tasks connected to college placement. In comparison to maintaining records manually, colleges can use the program to manage placements and save time and effort. Institutions will find it simpler to carry out their placement activities effectively. It will also help the placement cell and the students because it will save them time and effort. The ability of a company to recruit better placements is significantly impacted by placement in addition to being a key element in attracting qualified applicants.

The application is developed to overcome the issues students face in college for placement activities. Campus placements help the institute project a more professional image, which promotes more employment and accreditation. Additionally, a good reputation draws students who are more ambitious and highly driven.

In order to maintain accurate data records, placement scheduling, and student notifications so that they can stay tuned and monitor the placements, a smart management system is required. College placement is frequently handled by a specialized placement cell. During multiple concurrent placements, there were several misunderstandings and notification problems, which occasionally resulted in a bad impression of the business or the new employees. To simplify the procedure and enhance the placement experience for the students, the colleges must have a placement management system in place.

## II. LITERATURE SURVEY

Pooja S Sharma and Reshma R Shetty et.al., [1] proposes a system where the software gathers the basic information of student, institution about various users including faculties, information about subjects offered. This software was designed for admission but it lacked placement activities. It had admission system, class attendance, online notes. The prime objective or goal was to reduce time and efforts on record keeping of students. The role of Head of each department was to maintain the record of each faculty. The Head of the department can also enter the attendance and internal marks of the student and post notes online. They had used waterfall model for the development. Waterfall model is a sequential design process methodology of an application which depicts the design flow of the process. The functionalities it

provided were entering a new faculty or staff, entering the attendance, entering marks of students. The application had features that helped the university but it lacked Placement activity feature.

Swati Kumari [2] proposes a system that considers how the automation of data retrieval might be achievable in the colleges. The skill that should be likely is determined by the customer and client necessities. This study enabled institutions to lead conversation and have authenticating data of college-related tasks. The methodology they used was registering the details of every student and faculty. The work defines the construction which allows the workplace to know about how data is exported among the college's divisions.

The application helped in storing details of students and faculty. The application helped to discover all the events happening inside the college which the students were not aware about. It had capabilities to handle the details of students, faculty and head of the departments. In this system the Head of the Department had an advantage of managing every detail of a specific student in his department. They used oracle database to store all the details. It too had features but lacked placement activities in the application as it serves a major role in a student. Their future enhancement had plans of including the placement activities features in their application.

K.G. Patel and C.K. Patil [3] proposes a system where the application handled various operations as collecting details of student and avoid duplicate records in the application. The methodology they used allowed students to register to the application and know about the placement activities happening in their college and participate in it. It used to send the students about the job offers via email. It had facilities to access the data about a student. The main objective was to reduce the paperwork and make everything computerized.

The system was designed in such a way it can handle the student details related to placement. Their goal to reduce paper work was to save environment. It was a web application and was not a dedicated mobile application. It had 3 modules and the administrator had various functionalities he can perform. It used to extract the records of a student from the college database. The interested student could register to jobs and attend test. Ultimately providing a good experience to the user. The main problem with this system was to search and sort the details of the student records and did not have any notifying feature except the notice board of the college.

Suraj Trimukhe and A. Todmal, et.al., [4] proposes a system that notifies the students about jobs. The system also helps the college to maintain records of current and previous students also. Placement officer prepares the schedule of all activities regarding the placement the company provides the criteria. The college used to send data to the company with details filled in excel sheet which was kind of manual book keeping.

The application used to store data of students who had registered to the application. When a company adds a job, all the registered students were getting a notification about the job but every student used to get the notification irrespective of them being eligible. The company had to re-filter those students who were not eligible which was a time-consuming task for the company. When a student applies for a job, the student will receive further details from the company if they are eligible. But the application was not stable for latest versions of android.

Hitesh Kasture and Sumit Saraiyya et.al., [5] proposes a system automates activities of Placement cell of college that provides opportunities to the students to increase selection ratio and it maintains student's information automatically. It collected details of the students and details about the college. Collecting and authorizing the resumes, communicating about the various job opportunities with the students.

The placement cell and the students had access to the application but the companies that visited the college did not have any access to the application which resulted in no communication between student and company. The major communication was happening used to happen between the placement cell and college. Since the companies had no access to the application, they could not rate the college they visit for the recruitment. All the details about the placement activities were conveyed to the students by the placement officer through the application.

The old applications lacked capabilities where companies did not have access to the application, causing tremendous stress for the placement cell to manually convey data to companies. A few more applications were created for university-related aspects such as admissions and exam payment but lacked a placement functionality. The applications did not have any alerting features about any new job profiles added by the company. Even though few applications had features of access to all placement cell, student and company, it did not have notification feature to notify students about the job they are eligible for.

**III. SYSTEM ARCHITECTURE**

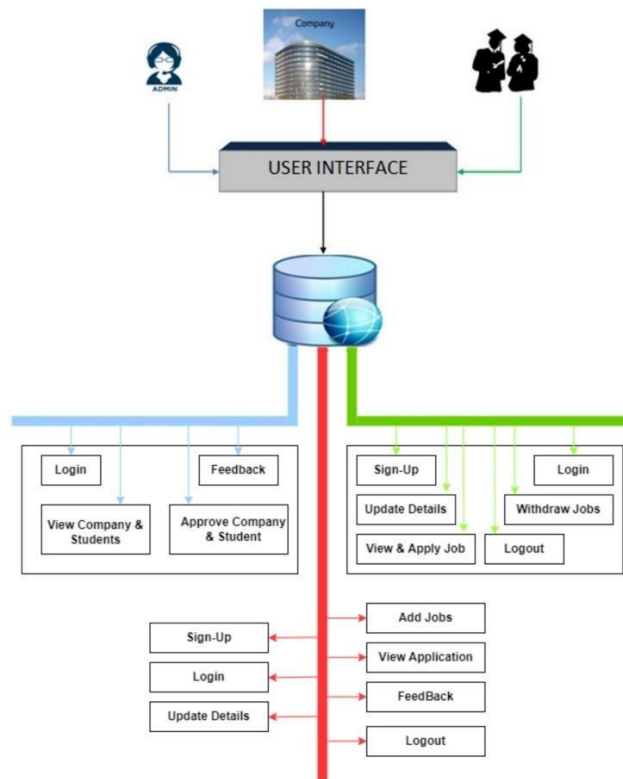


Figure 3.1 System Architecture

The Smart Placement Co-Ordinating Application has three main users, Placement Cell for the placement department of the college, Student option for the students to register to the application and Company option for the companies to recruit students based on their requirements. An institution's Placement Cell can log in to the application and execute activities such as approving companies, approving students, viewing companies, and viewing students.

Companies may register for the application and registered companies can login directly to perform numerous functions such as advertising a job position, seeing student applications, sending E-Mail to the students, and providing feedback on the universities they visit. All the student and company data will be stored in the mobile phone and can be exported anytime.

Students may register for the application, and existing students can log in and perform a variety of functions such as searching for jobs, applying for jobs when they get notified about the job via SMS alert in their registered mobile number, and editing their basic details in their profile.

The flow of implementation is a picture that represents workflow or process of an application. On the start-up screen when the user logs into the application, the user will get an option to choose from placement cell, student or company. The company has to register to the app by providing basic details such as name, address, mobile number, profile photo. Once the company has entered their details, the user can request the placement cell for the profile approval. After getting the access the user can perform several tasks such as editing their profile by adding basic details about their company like name, address, profile name, company description, add jobs according to their business requirements, view student applications to recruit them, view ratings from the students about their company and also add recruited students who have been recruited by the company.

The student has to register to the app by providing basic details such as name, USN, address, mobile number, academic details. Once the student has entered their details, the user can request the placement cell for the profile approval. After getting the access, the user can perform several tasks such as editing their profile by adding basic details, apply for jobs which they are eligible, view available jobs, rate companies that visit their college and also see other students who have been recruited by the company.

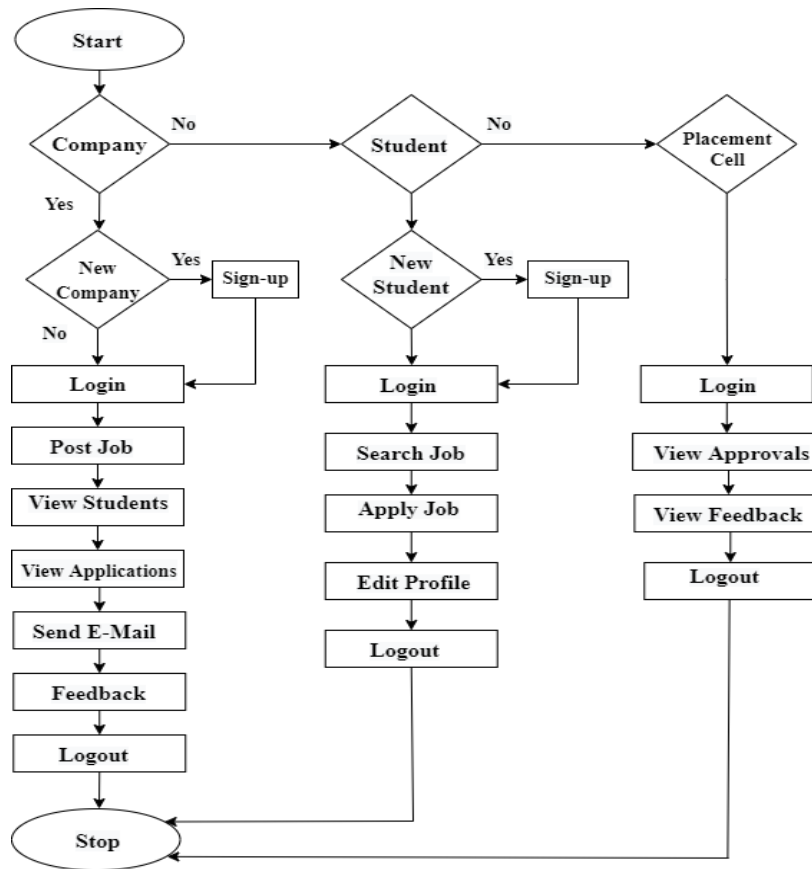


Figure 3.2 Flowchart Implementation

The Placement cell can log into the application and has authority to approve student or company requests and give them access to the application, view feedbacks provided by the companies about the college for improvement.

**IV. PROPOSED METHODOLOGY**

The goal of the recommended system is to give a system better facility. The suggested strategy can address every flaw in the current system. It minimizes paperwork, ensures data accuracy, ups data security, and buys time. Only eligible students have a chance. It simplifies the process of creating reports and promotes effective information flow. The proposed system is cost-effective.

**Advantages**

- This system assists potential job seekers in their search for operational possibilities.
- This method aids HR personnel in the recruitment of new employees for the company.
- Instead of going to the placement department, students will register online.
- This technique helps you save time and effort.

Hashing is a technique developed for encrypting a plaintext. Password hashing uses a one-way cryptographic function which usually takes an input that can be of any size and it gives output a totally different string of some fixed size. Authenticating users is a good practice in any application to limit access to particular users to some functions. It is a method of confirming who a person claims to be. Creating a strong password is a must for any user to avoid attackers getting the credentials.

Example password strength rules:

- Password must be of minimum 8 characters
- Password must contain at least one uppercase letter.

- Password must contain at least one number.
- Password must contain at least one special character.

When a user registers to the application and logs in to the application, his credentials will be verified with database if the user account exists in the database or not. Before storing any passwords in the database, we have to hash them which will be unrecognizable from the plaintext password and it will be impossible to regenerate the plaintext password based on the hashed one. Any attacker should not be able to get any of the user's login credentials, so we have to hash all the passwords. Basically, when we enter a plaintext and hash that text, it will get converted to hashed text which will be unique from the original plaintext.

## V. RESULT AND ANALYSIS

The older systems lacked few features where the companies did not have access to the application. The application was not smooth and slow. While other application had admission features and exam payment feature but did not have placement feature. The application lacked an option for offering comments or providing any feedback about the college, making it difficult for the college to enhance their hospitality and teach students depending on corporate demands. They did not have any features like notifying the students if they are eligible for certain job profiles. The older systems did not have protection for the login credentials through which it was easy for the attackers to steal data from the application.

The Smart Placement Co-Ordinating application aids in giving the greatest possible experience for the user when doing various functions across the application. The application is faster and smooth when compared to older systems. It has password protection using hashing. The placement cell can successfully log in and authorise companies and students by providing them access to the application. Students may use this application to apply for employment and rate companies that visit their college once they get access by the placement cell of the college.

Companies may log in and see the applications of students who have applied for the company's employment profiles. When the students are eligible for any job profile a company is looking for, the student gets a SMS alert notifying that the student can apply for that job profile. Another platform available in internet is Naukri website where anyone who are seeking job can find job of their desired position based on their skills. It is widely accessible to everyone around the globe while these placement applications mainly focus on college students who are about to graduate.

## VI. CONCLUSION

The main task of the placement offices in institutions is to manage all the data regarding students and businesses is often a big burden. Information management must be done manually. The primary problem facing the placement cell is locating, organizing, and updating student data. Furthermore, there is no system in place to alert students to commercial visits. The current technique of alerting the pupils is through the Notice Board. Therefore, it is necessary to create a system that can address this problem. The Smart Placement Coordinator software offers a solution to the aforementioned problem. The software can be used by colleges and other educational institutions for duties linked to placement. The software also has the advantage of having a simple and user-friendly user interface. Overall, the workflow in the training and placement department is automated.

## VII. REFERENCES

- [1] Pooja S Sharma, Reshma R. Shetty, Gayatri V. Yadkikar, Prof. Dhanashri Kanade, "College Automation System", IJIRST International Journal for Innovative Research in Science & Technology | Volume 2 | Issue 10 | March 2016 ISSN (online): 2349-6010
- [2] Swati Kumari, "College Placement Management System", Multidisciplinary Journal of research in IT, Special Issue, April 2015
- [3] K.G. Patel and C.K. Patil, "Study of Implementation of online Placement System", International Journal of Advanced Technology in Engineering and Science (IJATES), Vol.No.4, Issue No.03, March 2016.
- [4] Suraj Trimukhe, Anil Todmal, Kanchan Pote, Monali Gite, Asstt. Prof. S.S. Pophale "Online Training and Placement System (IRJE Department of Information Technology, D.V.V.P.C.O.E.A., Ahmednagar, Maharashtra, India, T)" International Journal of Advanced Research in Computer Science and Software Engineering, Volume 7, Issue 4, April 2017.
- [5] Hitesh Kasture, Sumit Saraiyya, Abhishek Malviya, Preeti Bhagat, "Training & Placement Web Portal", International Journal on Recent and Innovation Trends in Computing and Communication ISSN: 2321-8169 Volume: 2 Issue: 3, March-2014.
- [6] Nilesh Rathod, Seema Shah, Kavita Shirsat, "An Interactive Online Training & Placement System", International

Journal of Advanced Research in Computer and Communication Engineering, Vol. 3, Issue 12, December-2013.

- [7] Anjali.V, Jeyalakshmi. PR, Anubala.R, Sri Mathura devi.G, Ranjini.V “Web Based Placement Management System” Computer Science Department, Saranathan College of Engineering, Venkateswara Nagar, Panjappur, Trichy-12, Anjali.V et al, / (IJCSIT) International Journal of Computer Science and Information Technologies, Vol. 7 (2) , 2016.
- [8] K.Anand, Rethesh D, J. Hemalatha, S. Karishma, R. Logeswari “Application for Training and Placement Cell” International Journal of Pure and Applied Mathematics Volume 119 No. 15 2018, 2013-2020.
- [9] Prof. Haresh Barapatre, Prashant Hadapi, Monish Lokhande, Pritam Tare “Online Aptitude Test” Yadavrao Tasgaonkar Institute of Engineering and Technology 1234Dept. Of Computer Engineering, International Journal for Research in Engineering Application & Management (IJREAM) Vol-01, Issue 01, APR 2015.
- [10] Dr. S.B.Vanjale, Rahul Kumar Modi, Supreet Raj, Akshit Jain “Smart Training & Placement System” Dept. of Computer Engineering, Bharati Vidyapeeth University, College ofEngineering, Pune, Maharashtra, India.
- [11] A. Ramteke, M. Deogade, and P. Deogade, “Student automation system for placement cell,” Iord Journal of Science & Technology, vol. 2, issue 2, 2015.
- [12] S. R. Bharamagoudar, R. B. Geeta, and S. G. Totad, “Web based student information management system,” International Journal of Advanced Research in Computer and Communication Engineering, vol. 2, issue 6, pp. 2342-2348, 2013.