

IOT BASED SMART HOME AUTOMATION

Miss. MAYURI D. NAITAM¹, Miss. CHAITANYA P. POFLEY², Miss. NEHA H. DARUNDE³,
Mr. MANOJA.TIKHAT⁴, Mr. ANIKET S. BELEKAR⁵,
Prof. R. C. Rajurkar⁶, Prof. A. V. REKKAWAR⁷

^{1,2,3,4,5} Student, Department of Electronics and Communication Engineering, Shri Sai College of Engineering and Technology, Bhadrawati, Maharashtra, India

^{6,7} Professor, Department of Electronics and Communication Engineering, Shri Sai College of Engineering and Technology, Bhadrawati, Maharashtra, India

Abstract - This paper presents an idea or a concept for home automation using ESP32 with Blynk, IR remote and manual switch to control 8 relays with internet and monitor the real time feedback in the Blynk app. Automation of device has a wide scope for this generation as well as in forthcoming generation. In this mobile communication technology is playing a major role in the world of automation. This article is fully based on low cost and reliable home control monitoring system for accessing and controlling devices and appliances remotely using Android based smart phone application. While using this technology the system improves the living standard at home, reduce human effort, energy efficient and time saving and thus make a smart home. And also it is very helpful for providing support to disabled people and fulfill their needs in home and thus they lead a normal life. This proposed system consists of Android mobile in using ESP32 with Blynk app, IR remote & Manual control relays. We are using Wi-Fi technology to monitor the device because of its accuracy, high range and instant connectivity. This module controls the home appliances with a very ease of installation and it is user friendly.

Key Words: Smart home, IoT, Home automation, Sensors, IOT.

1. INTRODUCTION

The Internet of Things is the interconnection of the various computing devices embedded in the daily appliances to the internet, thus enabling them to communicate with each other. This enhances the end users quality of life and to improve efficiency and sustainability in the day to day activities. In short, many of the smart devices will be communicating over IoT. The analyst firm Gartner predicts that by 2020 there will be more than 20 billion devices connected to the Internet of Things. As we will approach that value, it is predicted that around \$6 billion will flow into the various domains of IoT like application development, device hardware, system integration, data storage, security, and connectivity. Nearly \$6 Trillion will be spent on IoT solutions by 2025.

We are living in a world that is rapidly evolving regarding automation. Automation is the ability to schedule events for the devices connected to the local network or the internet through time-related or stimulus-triggered programs. From large industries to small offices, everywhere the concept of automation are being implemented to reduce human intervention and to improve energy efficiency and productivity. Home automation or domestic is the process of automating the various appliances inside a house thus converting it into a smart house. It involves the automation of heating, lighting, ventilation, climate control as well as various other embedded system devices that can be connected to the internet. Another major characteristic of the present generation of home automation is the remote monitoring and access of the automated appliances. With the evolution of smartphones and tablets and the development of various communication technologies like Wi-Fi, Bluetooth and ZigBee we have gained the ability to connect to our home network while we are away indeed. There are many advantages associated with home automation. One of the advantages is the immense potential for energy conservation and cost saving.

The efficient home automation system is proposed in this paper. The significant contributions of this paper are as follows:

- 1) Initially, we automate the functioning of some essential home appliances like fans, lights, air-conditioners and water heaters by the readings received by various sensors installed at different parts of the house.
- 2) All These sensors will be connected to the Node MCU ESP8266 or the Arduino Uno which will process the

readings received by the sensors and control the relays connected to the appliances

3) A CT sensor is used to measure the energy consumed in the home regularly and updated in the database. Further, our solution uses database values and calculates power bill and it notifies through the SMS for every 15 days.

4) A load sensor has also been connected to the Arduino which keeps a track on the amount of LPG in the cylinder. If the weight of the cylinder reaches a certain threshold, then a SMS is directly sent to the gas booking agency and the user is notified about the booking along with the unique booking ID.

2. RELATED WORK

Home Automation has been on the rise in the recent times. Starting from agriculture, to the cities having the tallest of the skyscrapers are inclined towards automation. In this section, we will discuss the various existing solutions proposed by different research papers.

In [5] the author uses 433 MHz radio frequency control module to control the home appliances directly. Gadgets like 4th Int'l Conf. on Recent Advances in Information Technology | RAIT-2018 smartphones and tablets can be directly connected to the central controller using the Wi-Fi interface. The only problem with radio signals is that they can be easily intercepted and are prone to distortions due to interference.

In [6] the author uses the Blue tooth 4.0 protocol to establish communication between the "smart home appliances" and the user. The user can use cell-phones or tablets to control these appliances remotely. The only disadvantage of using Blue tooth technology is that the devices can only be controlled from short range. As an Example in [7], the author's proposed Blue tooth based home automation systems. In this solution, the home appliances are controlled based on Android smartphones without the Internet controllability. All the home appliances are physically connected to the Blue tooth controller and it is controlled by using Smartphone. However, in this solution, the home appliances are not remotely connected and not able to operate remotely.

IoT based home automation using android phones [8] is proposed. In this, the authors used two types of home automation, i.e., Blue tooth and Ethernet-based. Also, the customized Android-based mobile application was used to control the home applications like Fan, TV, AC, etc. Nonetheless, data sources in the prototype is not clear and it leads deadlock situation when multiple Android phones try to access same web portal.

In [9] a smart data acquisition system and energy management system has been created which displays the necessary data on a web page with the help of SMS, GPRS and email alerts. The ARM microcontroller has been used for controlling the devices and for wireless communication. The system was designed based on the IEEE1451 protocol which focuses on defining transducer electronic data sheet for all the transducers used.

The low cost, flexible and ubiquitous smart home system is presented [10]. In this, Arduino Ethernet is used to communicate over the Internet with the customized application installed in on Android mobile. The Arduino device is integrated with various sensors like humidity sensors, temperature sensors, smoke/gas sensors. All these sensors are controlled by the mobile application used by the user. The proposed prototype is tested and has analyzed the efficiency. However, the proposed system generated alerts in the form e-mail messages, when the particular home application reaches the given threshold.

In [11] an Ethernet-based smart home automation and energy management system has been proposed based on the Intel Galileo development board. Various sensors have been used to control the home appliances as well as to maintain the security of the house.

In [12] a TI Wi-Fi CC3200 Launchpad has been integrated with a PIR sensor to detect motion and send a voice call to the owner of the house. The owner can then decide whether to disable the security system or not. He can also remotely control the home appliances. This implementation also does very little regarding automation.

3. MOTIVATION

Home Automation has been on the rise in the past few years. With ever-evolving technology, there have been smarter and more advanced solutions in the domain of home automation. To enhance the standard of living, the appliances need to be wholly automated without any user intervention in any form whatsoever. This enables the end user hassle-

free interaction with the appliances as the appliances learn and react as per the user's requirements without him physically pressing a button. Wired sensor systems are more difficult to handle and also require much amount of wiring the sensors at different locations. Thus, the importance of wireless sensor node has been on the rise and is a critical factor for efficient implementation of home automation. Energy saving is one of the significant advantages of automating home appliances. Thus, the user must be kept aware of the energy consumption of the automated appliances. In a developing country like India, where people have busy life schedules, providing efficient energy saving and comfort at low prices and higher efficiency is of utmost importance.

4. PROPOSED SYSTEM

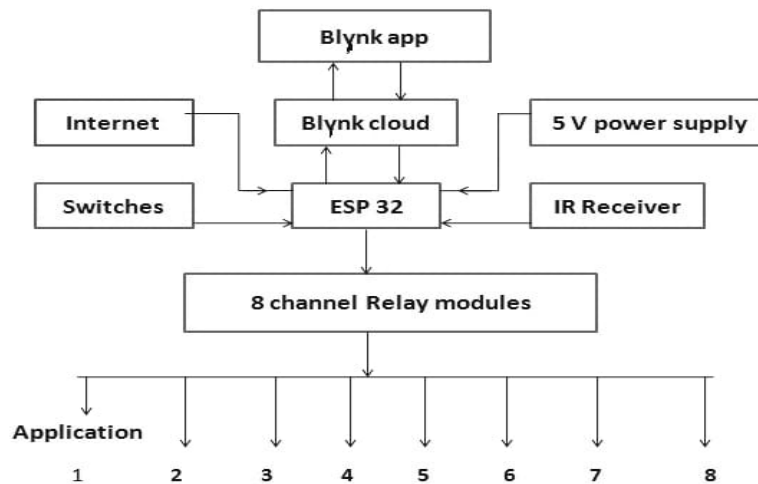


Fig -1: Proposed System Configuration

The proposed system configuration and prototype is shown in Fig. 1 and 2. The following sections explain about the working modules, involved in the proposed solution.

A. System Design

Our proposed prototype mainly consists of three layers of implementation, namely:

- Sensor Node Layer
- Sensor Data and Database Interface Layer
- Server and Notification Layer

1) **Sensor Node Layer:** The sensors, namely, light sensor, IR sensor and temperature sensor are connected to the NodeMCU ESP8266. The CT sensor, HX711 ADC module and the load cell are connected to the Arduino coupled with Ethernet shield. The sensors acquire the data of the variables of the home environment and send the data to the NodeMCU. The NodeMCU then triggers the relays connected to the lights, blinds, fan, air conditioner and the heater as and when the necessary conditions are met. A microcontroller is a control device that comes embedded with peripherals, memory and a processor. The remote controlling and automation of the appliances are made possible by the microcontroller which is programmed to process the response produced by the various sensors and to trigger the appliances according to the automation architecture. The two microcontrollers used in the project are:

Arduino Uno: Arduino Uno is a microcontroller board based on the ATmega328P microprocessor. It has 14 digital I/O pins, six analog inputs along with various other ports and jacks. The Arduino can be powered directly by the computer with the help of the USB cable provided, or it can be powered using an AC-to-DC adapter or a battery. The Arduino can be programmed using the Arduino IDE which is based on the C programming language. It is a relatively compact and easy to handle the device with many processing capabilities.

Node MCU ESP8266: The ESP8266 is a low-cost Wi-Fi chip with full TCP/IP stack and MCU (microcontroller unit) capability produced by a Shanghai-based Chinese manufacturer, Espressif Systems. The low cost, compact size and the presence of an inbuilt Wi-Fi module were the reasons for selecting this microcontroller.

B. Objectives:

The sensor node senses the real-time changes in all the variables in the room using various sensors. The microcontroller assimilates the sensors data and then triggers the relays connected to the appliances, thus automating them without any user intervention. The energy of the automated appliances along with the units consumed, the total price and a reminder of booking a new gas cylinder beforehand is sent to the database. The PHP program then notifies the user about the price incurred for every 15 days and a reminder for booking a new gas cylinder day before completion of the existing one.

C. Implementation Details

1) **Data Flow Diagram (DFD):** The working model is shown in the form of DFD as given in Figure 5 and explained below:

- The sensors in the sensory nodes detect the values of the variables in the environment and send it to the Analog to Digital Converter.
- The ADC relays the converted data to the microcontroller which processes the obtained value set.
- The microcontroller controls the relays which are connected to the fan and light depending on the sensor value received.
- Then, the microcontroller flashes the information on the serial monitor which in turn is sent to the database.
- A local server is created using XAMPP to transmit the information in the database to the user and thus notify him about the price of the electric bill for every 15 days and the requirement for a new gas cylinder.

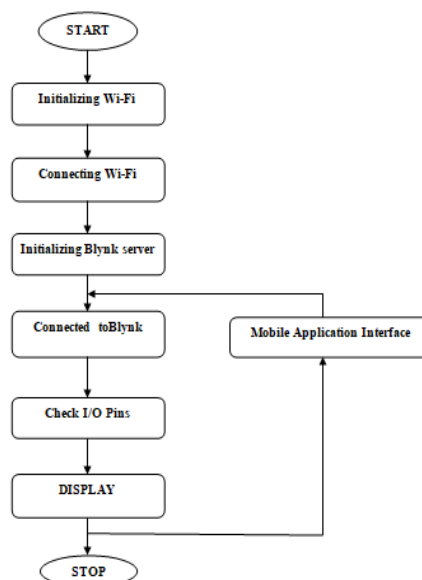


Fig -2: Data flow diagram of the proposed system

2) **Hardware:** In the hardware implementation of the system, we are using NodeMCU ESP8266 as the main microcontroller coupled with Arduino. NodeMCU ESP8266 comes 128k bytes memory and 4MB of storage. Relays act as a medium between the microcontroller and appliances for their automation. The appliances are turned ON and OFF based On the obtained sensor values. Total specifications are given TABLE 1.

3) Software: The main software components of the implementation are as follows:

Microcontroller programming: Both the Arduino UNO and Node MCU ESP8266 have been programmed using the Arduino IDE. The CT sensor, temperature sensor, and Load cell have been connected to the Arduino. The Irms value from the CT sensor is used to calculate the total units consumed. The load cell calculates the amount of LPG in the cylinder and stores it in a local variable. The temperature sensor is used to automate the air conditioner. The Arduino Uno code does all these calculations. The IR sensor and LDR have been connected to Node MCU ESP8266. These are used to control the blinds and lights by triggering the relays. The main advantage of using ESP8266 is that once it is connected to the internet it can be controlled remotely from anywhere in the world by using its unique IP address. The Algorithm-1 and 2 describe the working procedure of Node MCU ESP8266 and functionality of Arduino.

TABLE I: HARDWARE MODULE SPECIFICATION

Parameters / Microprocessor	ESP 8266 Node MCU	Arduino UNO
Memory	32-bit	NA
Processor	LX 106	AT mega 328P
Processor clock	80Mhz 160 MHz	16 MHz
RAM	< 45 KB	8 KB
Storage	16 MB	32 KB
Built-in WiFi	2.4GHz supports 802.11 b/g/n	NA
ADC PIN	1 (10-bit resolution)	6
GPIO Pins	10	14
Operating Voltage	3.3 V	7-12 V

5. CONCLUSIONS

In this paper, the home automation is improved by considering a Wireless sensor node. A smart home integrates various electrical appliances in the home and automates them with no or minimum user intervention. The smart home keeps track of different environment variables present and guides the appliances to work according to the needs of the user. Not only automating the home appliances of daily usage but also notifying the user about the price of his electric bill in regular interval and automatically booking the gas cylinder, if the level of the gas reaches lower than the threshold. By considering, the above features, we have developed the prototype and tested. We achieved the development of Smart Home by using the Internet of Things technologies. From the experiment, it was found that we can manage to make low cost, flexible and energy efficient smart home for the better and greener future.

REFERENCES

- [1] Luigi Atzori, Antonio Iera, and Giacomo Morabito, The internet of things: A survey, Computer Networks, vol. 54, no. 15, pp. 2787-2805, 2010.
- [2] Somayya Madakam, R Ramaswamy, and Siddharth Tripathi, Internet of things (iot): A literature review, Journal of Computer and Communications, vol. 3, no. 05, pp. 164, 2015.
- [3] Bing, Kang, Liu Fu, Yun Zhuo, and Liang Yanlei. "Design of an Internet of things-based Smart Home System." In Intelligent Control and Information Processing (ICICIP), 2011 2nd International Conference on, vol. 2, pp. 921-924. IEEE, 2011.
- [4] Kamal, Md Sarwar, Sazia Parvin, Kashif Saleem, Hussam Al-Hamadi, and Amjad Gawanmeh. "Efficient low cost supervisory system for Internet of Things enabled smart home." In Communications Workshops (ICC Workshops), 2017 IEEE International Conference on, pp. 864-869. IEEE, 2017.
- [5] Wang, Ming, Guiqing Zhang, Chenghui Zhang, Jianbin Zhang, and Chengdong Li. "An IoT-based appliance control system for smart homes." In Intelligent Control and Information Processing (ICICIP), 2013 Fourth International Conference on, pp. 744-747.
- [6] Kazi, Riyaj, and Gaurav Tiwari. "IoT based Interactive Industrial Home wireless system, Energy management

system and embedded data acquisition system to display on web page using GPRS, SMS & E-mail alert." In Energy Systems and Applications, 2015 International Conference on, pp. 290-295. IEEE, 2015.

[7] Piyare, R., Tazil, M.: Bluetooth based home automation system using cell phone. In Consumer Electronics (ISCE), 2011 IEEE 15th International Symposium on, pp. 192-195.(2011).

[8] Kumar Mandula, Ramu Parupalli, CH AS Murty, E Magesh, and Rutul Lunagariya, Mobile based home automation using internet of things (iot), in Control, Instrumentation, Communication and Computational Technologies, International Conference on. IEEE, 2015, pp. 340343.

[9] Gupta, Punit, and Jasmeet Chhabra. "IoT based Smart Home design using power and security management." In Innovation and Challenges in Cyber Security (ICICCS-INBUSH), 2016 International Conference on, pp. 6-10. IEEE, 2016.

[10] Shiu Kumar, Ubiquitous smart home system using android application, arXiv preprint arXiv:1402.2114, 2014.

[11] Kodali, Ravi Kishore, Vishal Jain, Suvadeep Bose, and Lakshmi Bopana. "IoT based smart security and home automation system." In Computing, Communication and Automation (ICCCA), 2016 International Conference on, pp. 1286-1289. IEEE, 2016.

[12] Madakam, Somayya, and R. Ramaswamy. "Smart Homes (Conceptual Views)." In Computational and Business Intelligence (ISCBI), 2014 2nd International Symposium on, pp. 63-66. IEEE, 2014.