

# Automatic Fault Detection in Transmission Lines using GSM Technology

**Prof. Vikramsingh R. Parihar<sup>1\*</sup>, Shivani Jijankar<sup>2</sup>, Anand Dhore<sup>3</sup>, Arti Sanganwar<sup>4</sup>, Kapil Chalkhure<sup>5</sup>**

Assistant Professor, Department of Electrical Engineering, PRMCEAM, Badnera-Amravati, India<sup>1</sup>

U.G Students, Department of Electrical Engineering, PRMCEAM, Badnera-Amravati, India<sup>2,3,4,5</sup>

**Abstract:** The Electric Power System is divided into many different sections. One of which is the transmission system, where power is transmitted from generating stations and substations via transmission lines into consumers. Both methods could encounter various types of malfunctions is usually referred to as a "Fault". Fault is simply defined as a number of undesirable but unavoidable incidents can temporarily disturb the stable condition of the power system that occurs when the insulation of the system fails at any point. A smart GSM based fault detection and location system was used to adequately and accurately indicate and locate the fault had occurred. This will ensure a shorter response time for technical crew to rectify these faults and thus help save transformers from damage and disasters. The system uses a current transformer, a voltage transformer, PIC 16F877 Microcontroller, RS-232 connector, and a GSM modem. The system automatically detects faults, analyses and classifies these faults and then, calculates the fault distance from the control room using an impedance-based algorithm method. Finally, the fault information is transmitted to the control room. In conclusion, the time required to locate a fault is drastically reduced, as the system automatically and accurately provides accurate fault location information. By using this project, we can detect the faults of three phase transmission lines one can monitor the Temperature, Voltage, Current by means of GSM modem by sending message.

**Keywords:** Transmission line, fault detection, GSM technology, automatic fault detection.

## I. INTRODUCTION

In power transmission systems, the majority of voltage and current signal distortions are caused by faults. Faults that occur in power transmission lines can cause an interruption of power supply. The time required to locate a fault is drastically reduced, as the system automatically and accurately provides accurate fault location information. This will ensure a shorter response time for technical crew to rectify these faults and thus help save transformers from damage and disasters. A smart GSM based fault detection and location system was used to adequately and accurately indicate and locate where fault had occurred. The system uses a current transformer, a voltage transformer, PIC 16F877 Microcontroller, RS-232 connector, and a GSM modem. The system automatically detects faults, analyses and classifies these faults and then, calculates the fault distance from the control room using an impedance-based algorithm method. Finally the fault information is transmitted to the control room. The project presents design and implementation of a distributed monitoring and centralized control system. The master slave communication with the Modbus protocol is implemented. Also using wireless technology GSM, SMS is send to a responsible person on mobile. GSM module has made an attractive option for wireless communication applications. The GSM network provides reliable communication quality with nationwide coverage. Short message service (SMS) has now become the most widely used service based upon GSM standard. At the same time the decreasing cost of GSM devices such as mobile phones and the GSM SMS provides a unique address (SIM card number) to the remote control unit and commands can be transmitted in the wireless communication network.

There are many courses of faults in power transmission leading to power outages, if not properly managed.

Notable among them includes:

- Faults at the power generation station
- Damage to power transmission lines ( tree falling on lines )
- Faults at the substations or parts of distribution subsystem
- Lightning

### **Types of transmission line faults:**

Power system's faults may be categorized as shunt faults or series faults.

### **Single line-to-ground fault:**

The most common type of shunt faults is Single Line-to-ground faults (SLG). This type of fault occurs when one

conductor falls to the ground or gets into contacts with the neutral wire. It could also be the result of falling trees in a rainy storm. This type could be represented as shown in Fig 1 below.

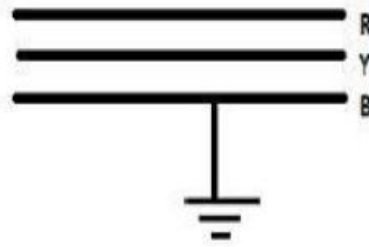


Fig 1 Single Line to ground fault

### line-to-line fault:

The second most occurring type of shunt faults is the Line-to-Line fault (LL). This is said to occur when two transmission lines are short-circuited. As in the case of a large bird standing on one transmission line and touching the other, or if a tree branch happens to fall on top of two power transmission lines.

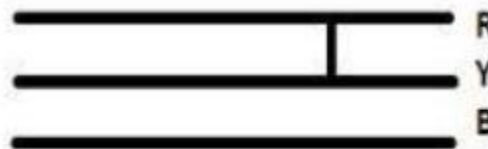


Fig 2 line to line faults

### line-to-ground fault:

The third type of shunt fault is the Double Line-to-Ground fault (DLG) in figure below. This can be a result of a tree falling on two of the power lines, or other causes.

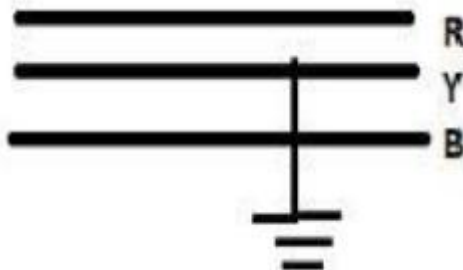


Fig 3 double line-to-ground fault

### Balance three phase:

The fourth and the real type of fault is the balanced three phase, which can occur by a contact between the three power lines in many different forms.

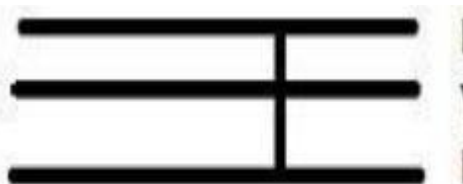


Fig 4 Balanced Three Phase fault

## II. PROPOSED METHOD FOR DETECTION AND LOCATION OF FAULT

Considerable research has been carried out in the area of fault diagnosis methods, particularly to radial distribution systems. These methods use various algorithmic approaches, where the fault location is iteratively calculated by updating the fault current.

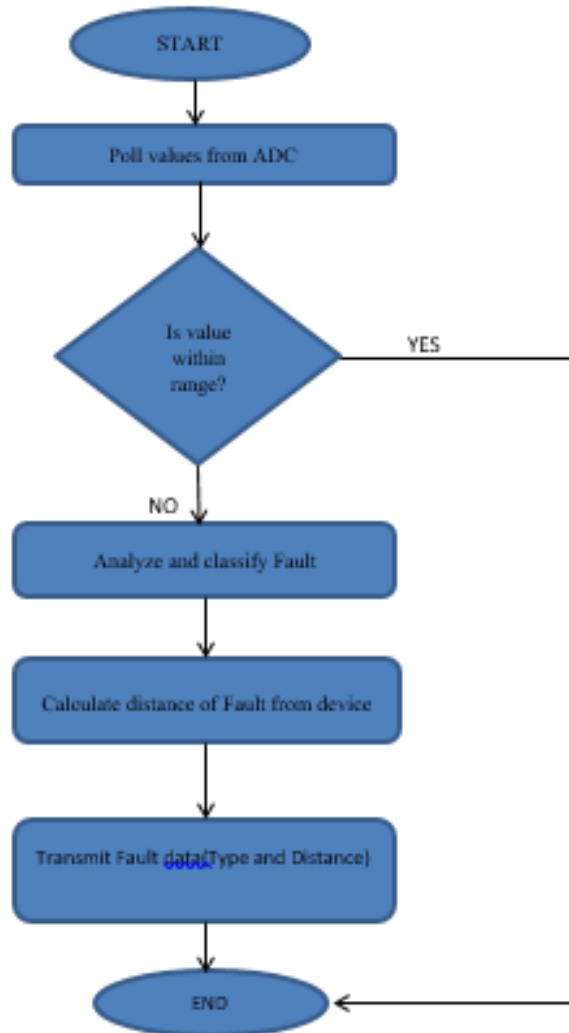


Fig. 5 Flowchart of the Proposed Approach

1. Impedance And Fundamental Frequency Component Based Methods
2. High Frequency Components and Travelling Wave Based Methods
3. Knowledge-Based Method
4. Artificial Intelligence (AI) and Statistical Analysis Based Methods
5. Distributed Device Based Methods
6. Hybrid Methods

### **Impedance and Fundamental Frequency Component Based Methods**

The distance of fault from the primary distribution bus is estimated by impedance based method. Voltage and current values measured at one end or both ends of the line are required in this method. The method uses mathematical equations to estimate the fault location. Suggested a technique that used the fundamental frequency voltages and currents measured at a line terminal before and during the fault. The fault location technique was described by considering a single-phase-to-ground fault on a radial system. Nevertheless, they still considered the line to be fully transposed, and was only good for line-to-ground faults. The proposed method that was based on measurements provided by Intelligent Electronic Devices (IEDs) with built-in oscillography function. This is installed only at the substation level and on a database that stores information about the network topology and its electrical parameters. In particular, on 12kV networks application of the method was a problem.

### III. CONSTRUCTION AND WORKING

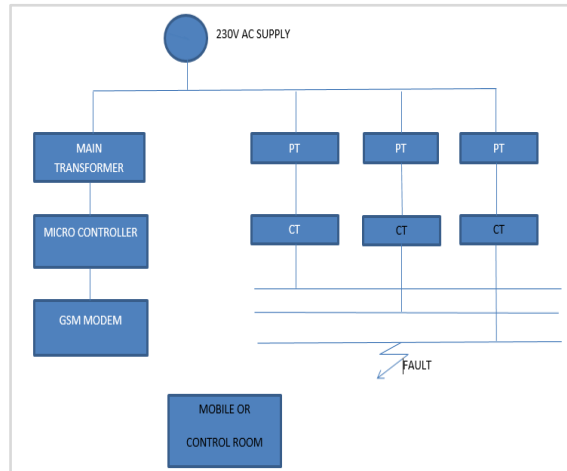


Fig. 6 Block Diagram of the Proposed Approach

#### Working

The set up or field device consists of 3 major components, instrument transformer (CT and VT), GSM modem and microcontroller. The primaries of the CT and VT which are connected to the line sense the corresponding current and voltage values of the system and feed the output to the ADC of the microcontroller which converts the signal to a digital form in order to be processed by the CPU of the microcontroller.

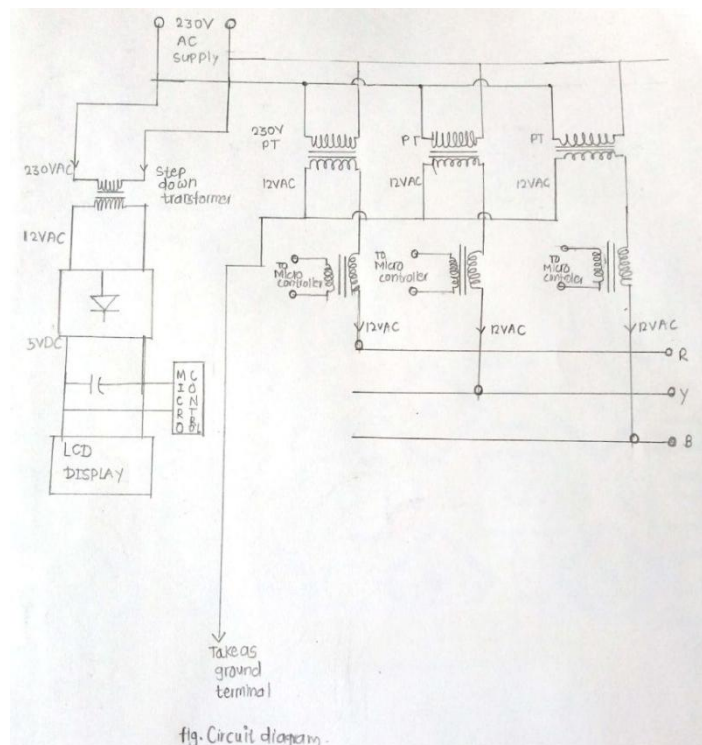


Fig. 7 Circuit Diagram of the Proposed Approach

The microcontroller serves as the central point of the set up. It contains a set of programming codes which have been stored in the EEPROM which enables it to classify the fault type based on the voltage and current values. Based on the program, the microcontroller compares these values to see whether they are within the range required. If the voltage and current values are out of range as compared to the reference, it gives an indication of a fault. The microcontroller also calculates the fault distance, relative to the device based on an impedance-based algorithm and then relays this information to the modem for transmission. In summary, the microcontroller classifies, calculates the fault distance and relays the information to the modem for transmission via the serial communication interface (SCI) which serves as an interface between the microcontroller and the modem. The RS-232 serves as the connector between the

microcontroller's serial communication port and the modem. The device is placed in the boundary of the sectionalized regions in the transmission system and the location of the fault is calculated relative to the position of the device. The unique identity of the SIM card in the GSM modem is used as an address for the device.

#### IV.RESULT

The analysis of fault detection and location system of transmission line. Whether it is any type of fault that can be detected and located. When fault get occurs on the transmission line the signal is send to the control room or mobile phone through a GSM modem. The message receive on the mobile that is the fault between pole 1 and 2 and the fault which is symmetrical or unsymmetrical like L-G, L-L, L-L-G, L-L-L, L-L-L-G. The signal that appears on the control room or mobile phone is the L\*G or any other type of fault occurred on transmission line.

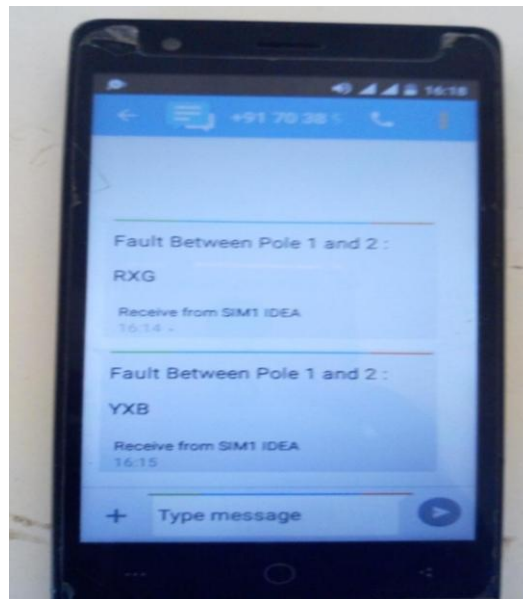


Fig.7 Result

#### V. CONCLUSION

Here, in this project we have designed a GSM based transmission line monitoring and indication system that sends information of the same to control room via SMS. The implemented system design mainly concentrates on the distribution system. It provides the way to detect the faults such as wastage of energy and power theft. The system continuously monitors various parameters of the system. It also helps to detect the fault at the appropriate time and hence avoids illegal use of electricity. Automatic monitoring, analyzing and recording is done on the PC screen through hyper terminal. The project has continuous monitoring system integrating the GSM communication technology and the microcontroller technology. It also represents the hardware architecture and the software flow. The implementation of the system will save large amount of electricity and thereby electricity will be available for more number of consumers in a highly populated country such as India.

#### REFERENCES

- [1] Ing. Komi Agbesi, Felix Attuquaye Okai . AUTOMATIC FAULT DETECTION AND LOCATION IN POWER TRANSMISSION LINES USING GSM TECHNOLOGY. Vol.no.5 issue 01 ,January 2016
- [2] S.Leelakrishnan, V.Ganesharavinth, K.Kalpana, P.Sivaranjani, S.Vijaykumar . Distribution Side Fault Detection and Disconnection Using GSM. Vol. 6, Issue 3, March 2017
- [3] Chandra shekar. P .Transmission Line Fault Detection & Indication through GSM .ISSN (Online): 2347 - 2812, Volume-2, Issue -5, 2014 .
- [4] Mr. Nilesh S.Wani, Dr. R. P. Singh . TRANSMISSION LINE FAULTS DETECTION- A REVIEW. Volume 7, Issue 2, March-April, 2016
- [5] prof. m. s. sujatha, dr. m vijaykumar. on-line monitoring and analysis of faults in transmission and distribution lines using gsm technique. 30th November 2011. Vol. 33 No.2 © 2005 - 2011 JATIT & LLS. All rights reserved.
- [6] R. N. Patel, Mamta Patel ,Fault Detection and Classification on a Transmission Line using Wavelet Multi Resolution Analysis and Neural Network . International Journal of Computer Applications (0975 – 8887) Volume 47– No.22, June 2012
- [7] Sushil Chavhan, Vaibhav Barsagade, Abhijit Dutta, Shubhangi Thakre . Fault Detection in Power Line Using Wireless
- [8] By MD Asaduzzaman Nur, Jahidul Islam, Md. Golam Mostofa & M oshiul Alam Chowdhury . Transmission Line Fault Detection Using Android Application
- [9] Preethi Manivannan , Prof. Manik Hapse , Fast and Accurate Fault Detection in Transmission Line using Wavelet Transform . Volume 2 | Issue 11 | April 2016. Sensor Network . Volume 3, Issue 3, March 2015. (IJEE)

- [10] P.A.Gulbhile, J.R.Rana, B.T.Deshmukh ,Review for Overhead Line Fault Detection Using GSM technology, Vol. 5, Issue 12, December 2016.
- [11] Bhanuprakash .M .E, Arun. C, Akhil Satheesh . Automatic Power Line Fault Detector. Vol. 6, Special Issue 4, March 2017
- [12] Okokpujie Kennedy, Amuta Elizabeth, Okonigene Robert, Samuel John, Monitoring And Fault Detection System For Power Transmission Using Gsm Technology, Int'l Conf. Wireless Network.
- [13] K. Nareshkumar, Member, IEEE, M. A. Choudhry, Senior Member, IEEE, J. Lai, A. Feliachi, Senior Member, IEEE. Application of Multi-Agents for Fault Detection and Reconfiguration of Power Distribution Systems. on June 03,2010.
- [14] Devanand Samuel S, Bashyam . Fault Detection on Transmission Line Using Thermopile Array and Real time IR Bitmap Generation . 2014 IJEDR | Volume 2, Issue 2 | ISSN: 2321-9939.Via Bluetooth. Online ISSN: 2249-4596 & Print ISSN: 0975-5861.
- [15] Neeta D. Sonwane, Prof. Devidas D. Dighe . Fault Detection and Autoline Distribution System with GSM Module . Volume 4 Issue IX, September 2016. IJRASETS. Chen, B. Mulgrew, and P. M. Grant, "A clustering technique for digital communications channel equalization using radial basis function networks," IEEE Trans. on Neural Networks, vol. 4, pp. 570-578, July 1993.
- [16] Vikramsingh R. Parihar, Line Trap and Artificial Intelligence Based Double Circuit Transmission Line Fault Classification, IEEE International Conference on Energy, Communication, Data Analytics and Soft Computing (ICECDs 2017).
- [17] Vikramsingh R. Parihar, Graph Theory Based Approach For Image Segmentation Using Wavelet Transform, International Journal of Image Processing (IJIP), Volume 8, Issue 5, pp 255-277, Sept 2014
- [18] Vikramsingh R. Parihar, Heartbeat and Temperature Monitoring System for Remote Patients using Arduino, International Journal of Advanced Engineering Research and Science (IJAERS), Volume 4, Issue 5, PP 55-58, May 2017
- [19] Vikramsingh R. Parihar, PC Controlled Electrical Line Cutting System, International Journal of Engineering Science and Computing (IJESC), Volume 7, Issue 5, pp 11380-11381, May 2017
- [20] Vikramsingh R. Parihar, Overview and an Approach to Develop a Four Quadrant Control System for DC Motors without using Microcontroller, International Journal of Engineering Science and Computing (IJESC), Volume 7, Issue 5, pp 11879-11881, May 2017
- [21] Vikramsingh R. Parihar, Image Analysis and Image Mining Techniques: A Review, Journal of Image Processing and Artificial Intelligence (MAT Journals), June 2017
- [22] Vikramsingh R. Parihar, Power Transformer Protection using Fuzzy Logic based Controller, International Journal of Engineering Research (IJER), Volume 6, Issue 7, pp 366-370, July 2017
- [23] Vikramsingh R. Parihar, Overview and an Approach to Real Time Face Detection and Recognition, International Advanced Research Journal in Science, Engineering and Technology (IARJSET), Volume 4, Issue 9, PP 39-46, Sept 2017
- [24] "Vikramsingh R. Parihar, Neural Network and Fuzzy Logic Based Controller For Transformer Protection, International Journal of Current Engineering and Scientific Research (IJCESR), Volume 4, Issue 9, PP 33-38 , Sept 2017"
- [25] Vikramsingh R. Parihar, A Novel Approach to Power Transformer Fault Protection using Artificial Neural Network, International Journal of Current Engineering and Scientific Research (IJCESR), Volume 4, Issue 9, PP 33-38 , Sept 2017
- [26] Vikramsingh R. Parihar, Power Transformer Fault Protection using Artificial Neural Network, Journal of Electrical and Power System Engineering (MAT Journals), Volume 3, Issue 3, pp 1-5 , Sept 2017
- [27] Vikramsingh R. Parihar, Fuzzy Logic based Controller for Power Transformer Protection, Journal of Electrical and Power System Engineering (MAT Journals), Volume 3, Issue 3, pp 1-5 , Oct 2017
- [28] Vikramsingh R. Parihar, Real Time Face Detection and Recognition: Overview and Suggested Approach, Journal of Image Processing and Artificial Intelligence (MAT Journals), Volume 3, Issue 3, pp 1-6, Sept 2017
- [29] Vikramsingh R. Parihar, A Novel Approach to Real Time Face Detection and Recognition, International Journal of Computer Sciences and Engineering (IJCSE), Volume 5, Issue 9, pp 62-67, Sept 2017
- [30] Vikramsingh R. Parihar, Automatic Irrigation System Using Android Mobile: A Review, International Journal of Advanced Research in Computer and Communication Engineering (IJARCCE), Volume 6, Issue 9, pp 200-203, Oct 2017
- [31] Vikramsingh R. Parihar, Transmission Line Multiple Fault Detection: A Review and an Approach, International Journal of Current Engineering and Scientific Research (IJCESR), Volume 4, Issue 10 pp 1-7, Oct 2017
- [32] "Vikramsingh R. Parihar, Regenerative Braking System for Energy Harvesting from Railways and Vehicles: A Review and an Approach, International Journal of Innovative Research in Electrical, Electronics, Instrumentation and Control Engineering (IJIREEICE), Volume 5, Issue 10, pp 18-25, Oct 2017"
- [33] Vikramsingh R. Parihar, RFID Based Student Attendance Management System: A Review and an Approach, International Advanced Research Journal in Science, Engineering and Technology (IARJSET), Volume 4, Issue 9, pp 262-265, Sept 2017
- [34] Vikramsingh R. Parihar, Distance Protection Problem in Series-Compensated Transmission Lines, International Journal of Advanced Trends in Technology, Management and Applied Science (IJATTMAS), Volume 3, Issue 10, pp 44-48, Oct 2017
- [35] "Vikramsingh R. Parihar, Series-Compensated Transmission Line Problem in Distance Protection, International Journal of Electrical, Electronics and Communication Engineering (IJEECE), Volume 3, Issue 10, pp 1-9, Oct 2017"
- [36] Vikramsingh R. Parihar, Series Compensated Line Protection using Artificial Neural Network, International Advanced Research Journal in Science, Engineering and Technology (IARJSET), Volume 4, Issue 10, pp 102-111, Oct 2017
- [37] Vikramsingh R. Parihar, Protection Scheme of Fault Detection in High Voltage Transmission Line, International Journal of Advanced Trends in Technology, Management and Applied Science (IJATTMAS), Volume 3, Issue 11, pp 1-4, Nov 2017
- [38] Vikramsingh R. Parihar, IOT Based Communication Technology for High Voltage Transmission System, Journal of Electrical and Power System Engineering (MAT Journals), Volume 3, Issue 3, pp 1-6 , Nov 2017

## BIOGRAPHY



**Prof. Vikramsingh R. Parihar** is an Assistant Professor in Electrical Department, PRMCEAM, Badnera-Amravati having 6 years of experience. He has received the B.E degree in Instrumentation from SantGadge Baba Amravati University, India, in 2011 and the M.E degree in Electrical and Electronics Engineering, SantGadge Baba Amravati University, India, in 2014. He is editorial board member of 19 recognized journals and life member of ISTE, HKSME, ICSES, IJCSE, the IRED Engineering New Zealand and IAENG. His domain of research includes Electrical Engineering, Instrumentation, Electrical Power Systems, Electrical and Electronics Engineering, Digital Image Processing, Neuro Fuzzy Systems and has contributed to research in a commendable way by publishing 32 research papers in National/International Journals and 4 papers in IEEE Conferences.