

Design and Analysis of Rectangular Microstrip Patch Antenna at 2GHz with Symmetrical 'L' Slot Structure at 3.2 mm Layer

Shashilata Rawat

Department of Electronics & Communication, V.I.S.T. Bhopal, India

Abstract: This paper shows the results obtained from simulation and fabrication process of inspired Metamaterial Structure with RMPA 2GHz with symmetrical 'L' slot structure at 3.2mm layer. To this date, the technology in Left-Handed Metamaterial is best suited for finding beneficial result for our purpose. The Metamaterial is the starting point of the analysis and is usually composed of periodic structure of metal and dielectric. We have designed the structure using simulation tools and fabricate them to see how the performance is changing by using inspired Metamaterial Structure with respect to fabricated RMPA alone. Simulation results showed that the RMPA return loss is reduced by -27.51 dB and the bandwidth is improved by 5% by incorporating the proposed metamaterial structure. RMPA with symmetrical 'L' slot structure at 3.2mm plane is simulated on IE3D Simulation platform, fabricated, and measured on Spectrum Analyzer in the microwave laboratory, Simulation and Measurement results are compiled here.

Keywords: bandwidth, dielectric substrate, Left-Handed Metamaterials (LHM), return loss, RMPA.

INTRODUCTION TO METAMATERIALS

The greatest potential of metamaterials is the possibility to create a structure with a negative refractive index, since this property is not found in any non-synthetic material. Almost all materials encountered in optics, such as glass or water, have positive values for both permittivity ϵ and permeability μ . However, many metals (such as silver and gold) have negative ϵ at visible wavelengths. A material having either (but not both) ϵ or μ negative is opaque to electromagnetic radiation. Although the optical properties of a transparent material are fully specified by the parameters ϵ_r and μ_r , refractive index n is often used in practice, which can be determined from $n = \pm \sqrt{\epsilon_r \mu_r}$. All known non-metamaterial transparent materials possess positive ϵ_r and μ_r . By convention the positive square root is used for n .

Metamaterials are artificial materials engineered to have properties that may not be found in nature. They are assemblies of multiple individual elements fashioned from

conventional microscopic materials such as metals or plastics, but the materials are usually arranged in periodic patterns. Metamaterials gain their properties not from their composition, but from their exactly-designed structures. Their precise shape, geometry, size, orientation and arrangement can affect the waves of light or sound in an unconventional manner, creating material properties which are unachievable with conventional materials. These metamaterials achieve desired effects by incorporating structural elements of sub-wavelength sizes, i.e. features that are actually smaller than the wavelength of the waves they affect.

These Metamaterials are typically realized artificially as composite structures that are composed of periodic metallic patterns printed on dielectric substrates. Metamaterials have been extensively studied in the recent years, in the framework of microwave applications.

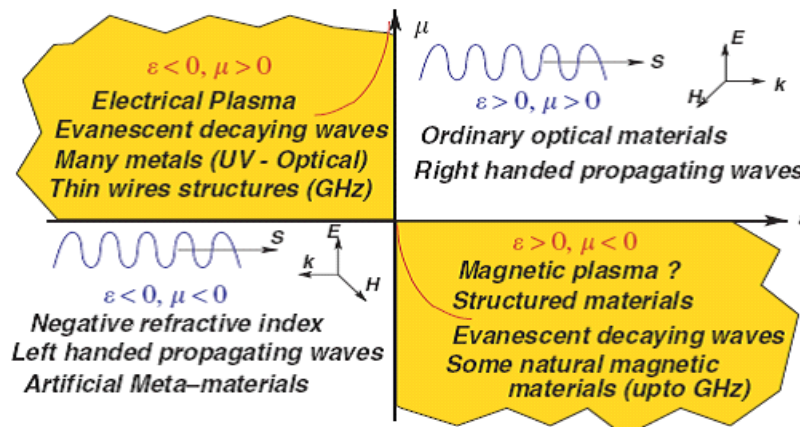


Figure 1: All possible combination of permittivity and permeability

Several works have been aimed towards the improvement of the performances of antennas in the microwave range of frequencies. It is noted in that some principal properties of waves propagating in materials with negative permittivity and negative permeability are considered and high directivity can be obtained from conventional antenna using Metamaterials.

LEFT-HANDED META-MATERIALS

Almost all natural materials follow the so called Right-hand Rule because their permeability and permittivity both have positive signs, then the electric field (\vec{E}), magnetic field (\vec{H}) and wave vector (\vec{k}) in such materials form a right handed set of vectors as shown in Figure 2. Wherein the electric field is along the positive x direction, the magnetic field is along the positive y direction and the wave propagates along the positive z direction, thus, and build a right-handed triplet. All materials encountered so far in a natural form are right handed. In Left-handed Meta-material (LHM), the wave vector is reversed in comparison with what it should have been for a RHM, the electric field and the magnetic field make a left-handed triplet with the wave vector. That means that if the electric field is along the positive x direction and the magnetic field is along the positive y direction, the wave will propagate along the negative z direction in LHM as shown in Figure 1.

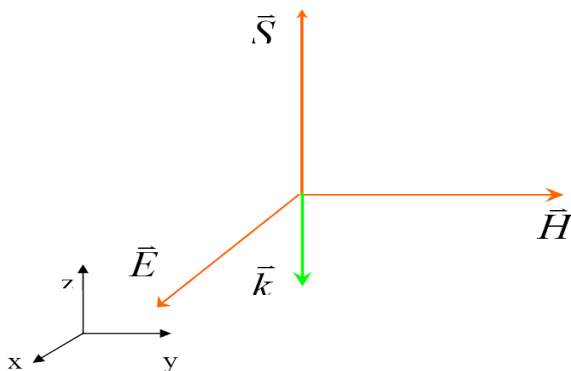


Figure 2: In LHM, the electric field, magnetic field and wave vector build a left-handed triplet and the Poynting vector is in the opposite direction of the wave vector

Now, examine the direction of the energy flow in LHM, which is characterized by the Poynting Vector as follows,

$$\vec{S} = \frac{c}{4\pi} \vec{E} \times \vec{H} \dots\dots\dots (1)$$

the Poynting vector power density can be written as[1]:

$$\begin{aligned} \vec{E} \times \vec{H} &= \frac{1}{\omega^2 \epsilon \mu} (\vec{k} \times \vec{E}) = \frac{\vec{k}}{\omega \mu} |\vec{E}|^2 \\ &= \frac{\vec{k}}{\omega \epsilon} |\vec{H}|^2 \dots\dots\dots (2) \end{aligned}$$

In RHM ($\epsilon > 0$ and $\mu > 0$), the Poynting vector is in the same direction as as shown in Figure 2, wherein both the

\vec{S} and the \vec{k} are along the positive z direction. For Left-handed Metamaterial ($\epsilon < 0$ and $\mu < 0$), the wave vector is along the negative z direction as shown in Figure 1. According to equation (2), the Poynting power density has the opposite direction of for ($\epsilon < 0$ and $\mu < 0$) thus \vec{S} is in the opposite direction of \vec{k} and along the positive z direction as shown in Figure 2. Consequently, the energy flow and the phase velocity in LHM are in opposite directions.

UNIQUE PROPERTIES OF LEFT-HANDED METAMATERIALS

Negative Refractive Index: For conventional material with $\epsilon_r > 0$ and $\mu_r > 0$, the refractive index is given $n = \sqrt{\mu_r \epsilon_r}$, so that the conventional material possesses a positive refractive index. Yet, Left-handed Meta-material has both negative permittivity ($\epsilon_r(\omega) < 0$) and negative permeability ($\mu_r(\omega) < 0$), the refractive index n has negative value [2] [3]. Inverse Snell's law: An incident light that enters left-handed meta-materials from a right-handed medium will undergo refraction, but opposite to that usually observed for two right handed media.

The Snell's law is described as

$$\frac{\sin \varphi}{\sin \theta} = \frac{n_2 \sin \varphi}{n_1 \sin \theta} = \frac{n_2}{n_1} \dots\dots\dots (3)$$

Where φ the incident is angle and θ is the refraction angle. Supposing medium I and medium II are conventional materials with $n_1 > 0$ and $n_2 > 0$ respectively, then refracted light will be bent with positive μ with the normal line OO' as indicated by the 4th light ray in Figure 3. If medium II is a left-handed meta-material with $n_2 < 0$, the refracted light will be bent in odd way with a negative angle with OO' as indicated by the 3rd light ray in Figure 3.

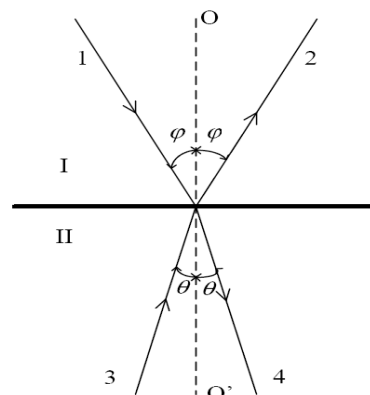


Figure 3: Passage of a light ray through the boundary between medium I with positive refractive index $n_1 > 0$ and medium II with refractive index n_2 .

The phase velocity expression shows that the phase velocity is related to the index of refraction; here c denotes

the speed of light in a vacuum. For LHM has negative refractive index, the phase velocity has negative value. In LHM, the phase velocity is in the opposite direction of the energy flow in the sense that the energy flow leaves the source in waves with a phase velocity pointing backward as shown in Figure 4.

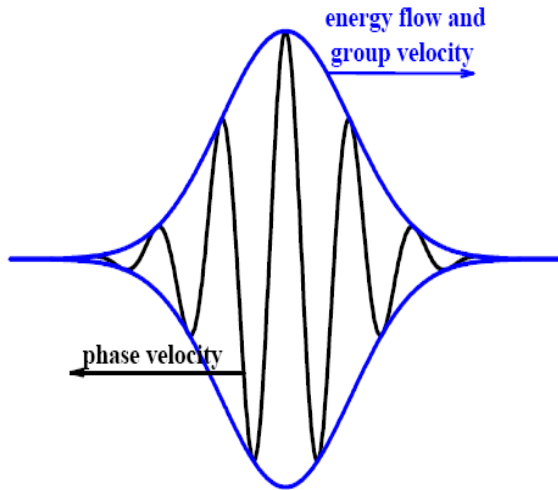


Figure 4: The energy flow and group velocity propagate forward in LHMs but the phase velocity is backward

Veselago[4] also predicted that the Doppler and Cerenkov effects will be reversed in LHM. An approaching source will appear to radiate at a lower frequency and charged particles moving faster than the speed of light in the medium will radiate in a backward cone, not a forward cone. These two exotic properties are not employed here, however details about them can be found in.

RECTANGULAR MICROSTRIP PATCH ANTENNA AT 2GHz WITH SYMMETRICAL ‘L’ SLOT STRUCTURE AT 3.2mm LAYER

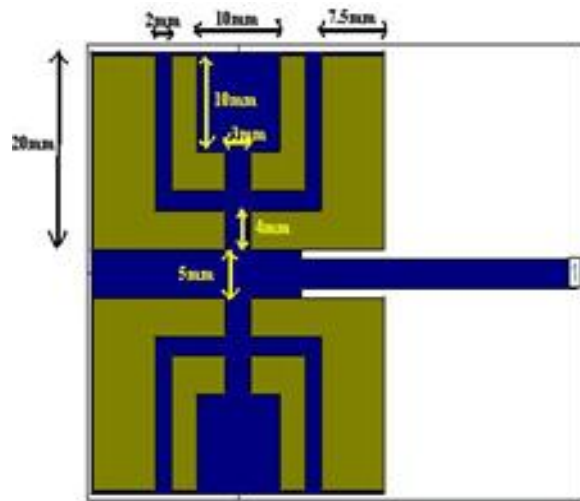


Figure 5: Rectangular Microstrip Patch Antenna at 2GHz with Symmetrical ‘L’ Slot Structure at 3.2mm Layer

The Design of RMPA for 2GHz has been done. First of all necessary parameters are calculated by the formula for given frequencies and after that by using IE3D Software the Simulation is done by the calculated parameters. A Research on Inspires Metamaterial Structure was carried out to understand the fundamentals of the newly discovered substance. Then, the IE3D Software was chosen to simulate the structure showed in Figure 5.6. The proposed design is based on ‘L’ slot. In this design these ‘L’ slots are symmetrical around ‘x’ and ‘y’ axis at 3.2mm layer. All the specifications related for designing ‘L’ slot are shown in Figure 5

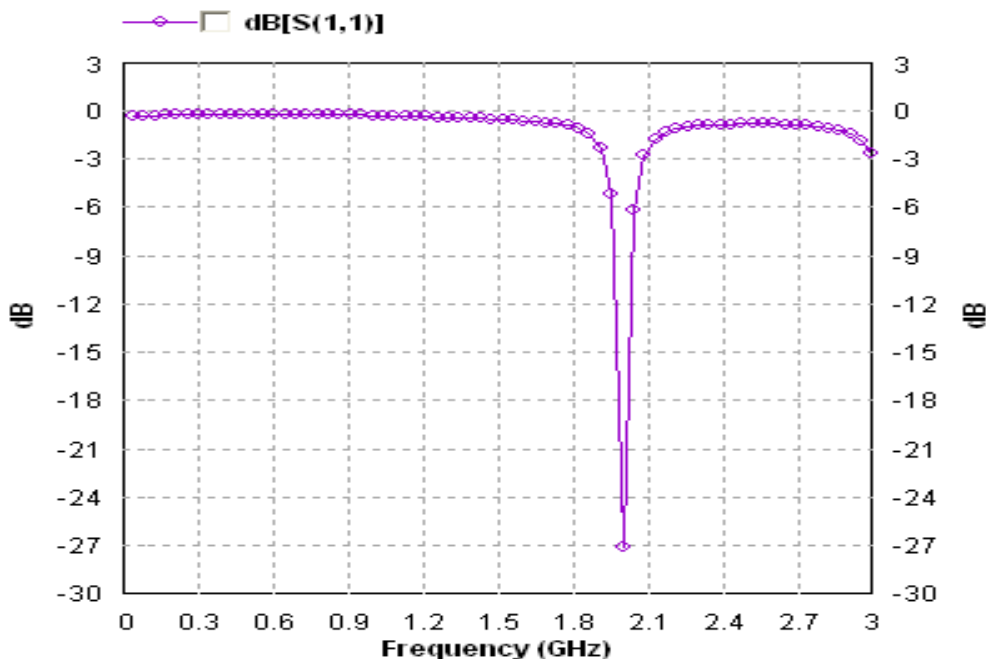


Figure 6:Return Loss (dB) Vs Frequency (GHz) Graph

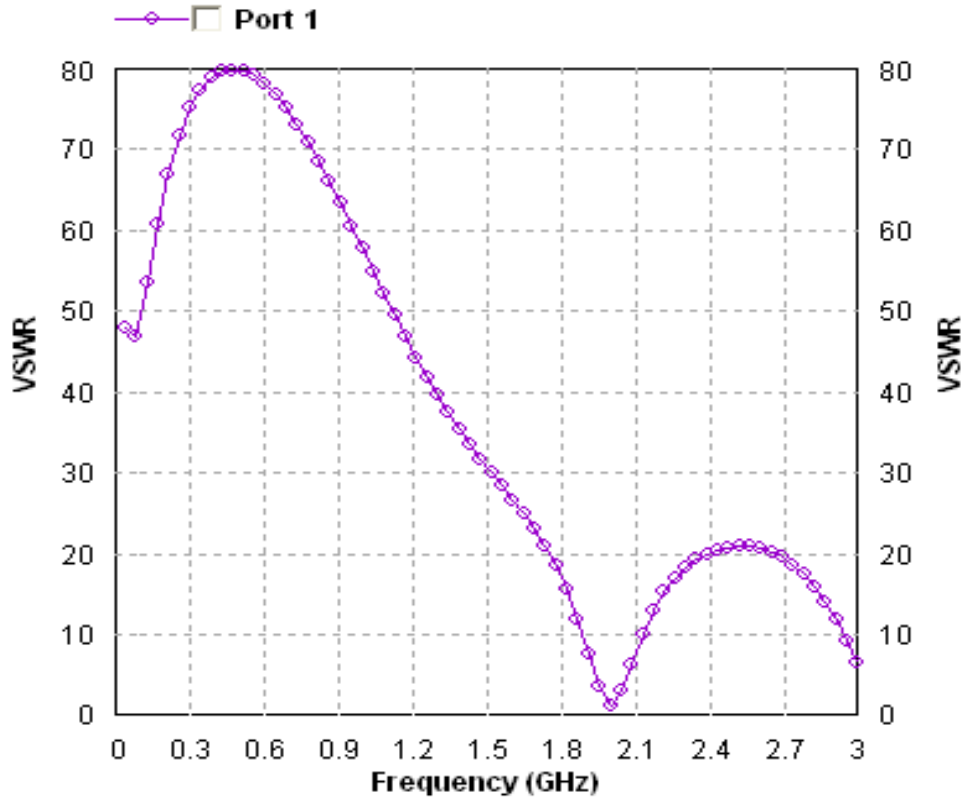


Figure 7: VSWR Pattern

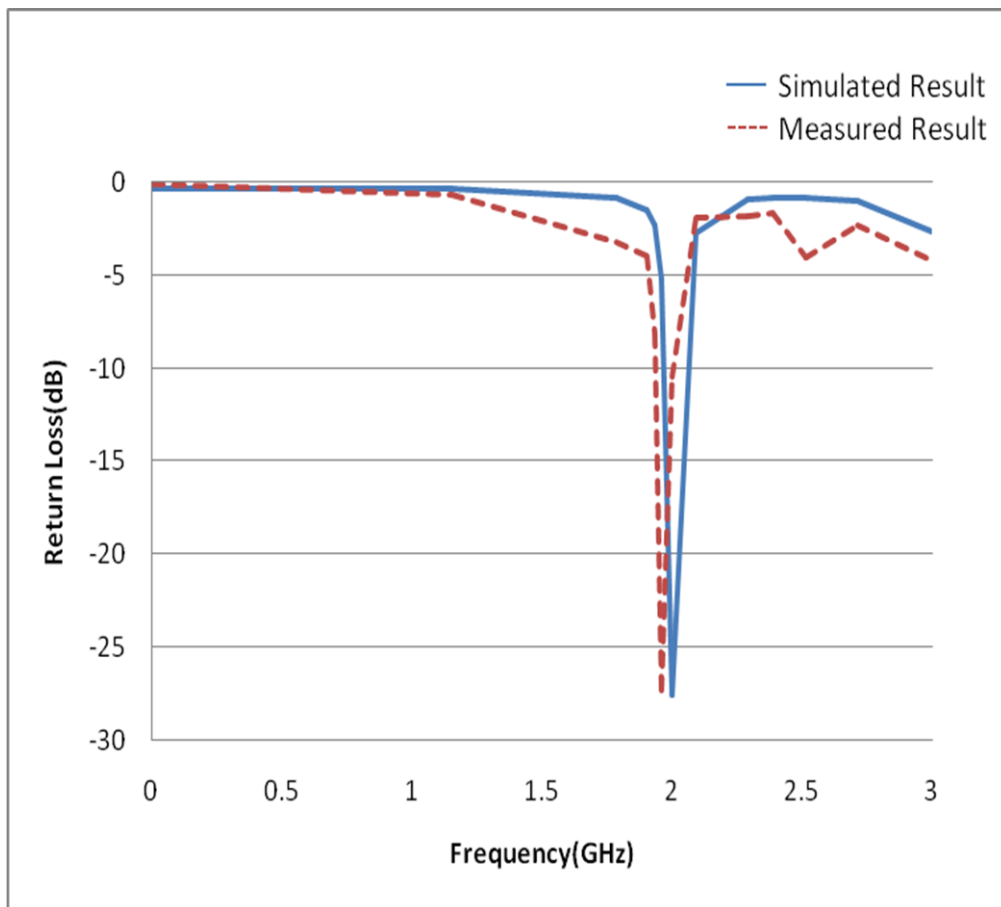


Figure 8: Comparative Graph between Simulated and Measured Result

RESULTS AND DISCUSSION

The Simulated and Measured Results of RMPA and RMPA with Symmetrical 'L' Slot Structure are shown in figure 8 at 2GHz frequency. Simulated RMPA alone exhibits the Simulated and Measured Return Loss is -20.11dB and 18.90dB while when it is designed with Symmetrical 'L' Slot Structure at 3.2mm Layer it shows simulated and measured return loss is -27.51dB and -27.31dB which shows significant reduction of Return Loss using above structure, and Improve 5% Bandwidth.

To fabricate the patch, screen printing is done on the substrate layer by the designing on the AutoCAD, coated with copper layer and the ground plane is well covered by tape in order to protect from etching. Etching of the printing plate is done by dilute solution of $FeCl_3$ till the required substrate is obtained. To get better response care is taken to obtain sharp corners. The plate can be taken out and wipe. Drilling and soldering is done in order to connect to the connector.

The Simulated and Measured Results are little bit different because of huge reflection, fabrication time error.

REFERENCES

- [1] P. Kolinko and D. R. Smith, "Numerical study of electromagnetic waves interacting with negative materials," *Optical Express*, vol. 11, No.7, pp. 640-648, 2003
- [2] H.A. Majid, M.K.A. Rahim and T. Marsi, Microstrip Antenna gain enhancement using left-handed metamaterial structure, *progress in Electromagnetic Research M*. Vol.8, 235-247, 2009
- [3] D.R.Smith, S.Schultz, P.Markos, and C.M.Soukoulis, "Determination of effective permittivity and permeability of metamaterials from reflection and transmission coefficients," *Physical Review B*, vol. 65, 195104, 2002.
- [4] Veselago, V. G., "The electrodynamics of substances with simultaneously negative values of epsilon and mu," *Soviet Physics Uspekhi.*, Vol. 10, No. 4, 509-514, 1968.